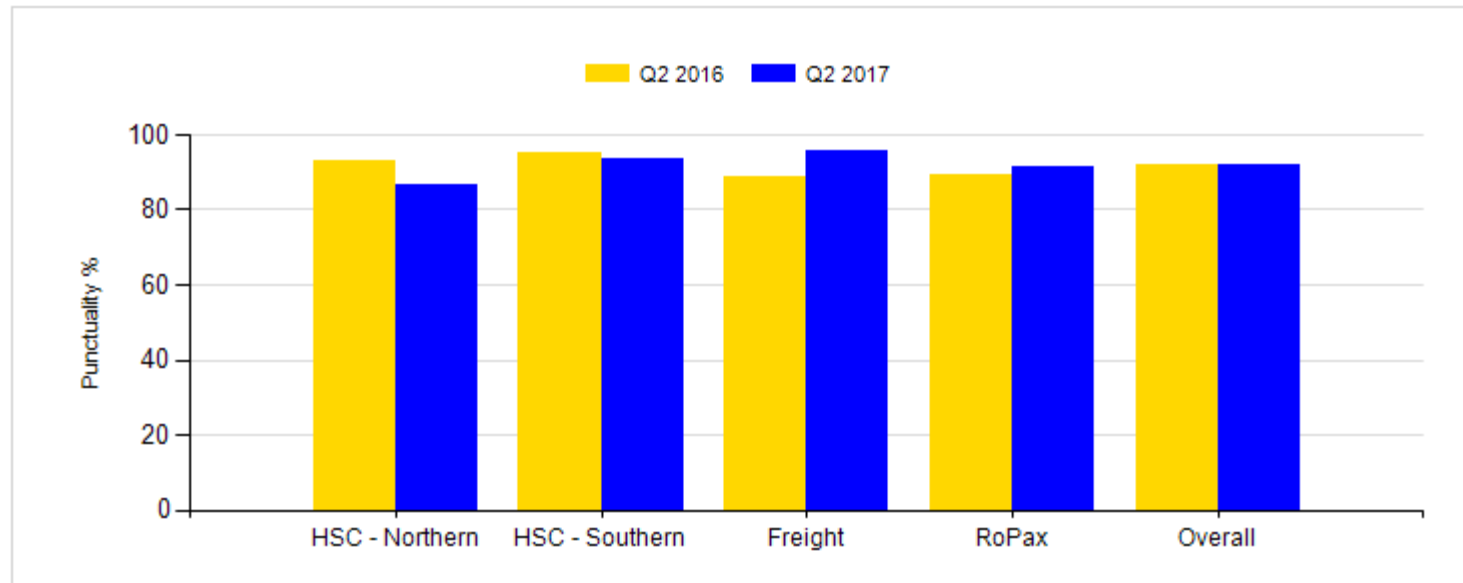




**Punctuality and reliability.**

***% of Arrivals Within 30 Mins of Scheduled Arrival Time***

## Q2 2017 vs. Q2 2016 - % of Arrivals Within 30 Mins of Scheduled Arrival Time



- Punctuality on the Northern route is slightly down in Q2 (86% vs 93%) mainly due to technical problems with Liberation's fuel and cooling system (April).
- Freight performing strongly at 96% partly due to no Arrow charter compared to the same qtr last year (26 Arrow sailings in Q2 2016).
- A slight improvement on the Southern route and RoPax vessel compared to the same qtr last year.
- 1,109 sailings (port to port journeys) arrived within 30 mins of scheduled arrival time out of a total of 1,208 (92%).